

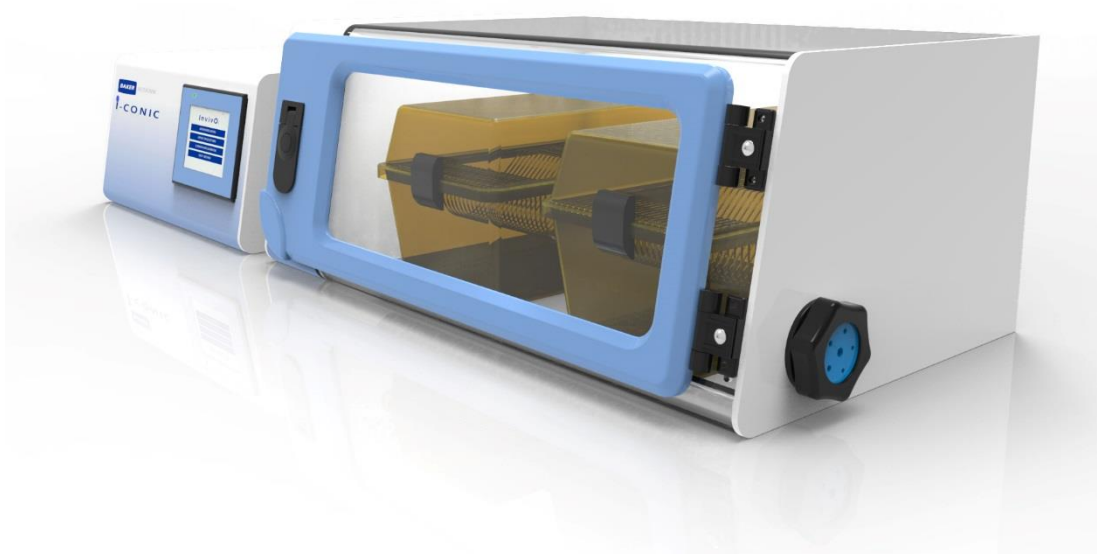
BAKER

RUSKINN

Addendum AD-009

VelO₂x

Physiological Oxygen System Gas Supply Requirements



VelO₂x System

Affix Serial Number Sticker Here

CONTENTS

TABLE OF FIGURES.....	i
INTRODUCTION.....	1
SAFETY INSTRUCTIONS.....	2
SERVICE REQUIREMENTS.....	3
GAS SUPPLY REQUIREMENTS	3
CONTACT DETAILS.....	4

TABLE OF FIGURES

Figure 1: ICONIC Gas Controller with Culture Chamber	1
Figure 2: ICONIC Rear Connections.....	3

INTRODUCTION

This addendum contains the gas supply requirements for the VelO₂x system. The supply requirements are specific to the gas cycling profile defined upon purchase of the system which are detailed in this addendum.

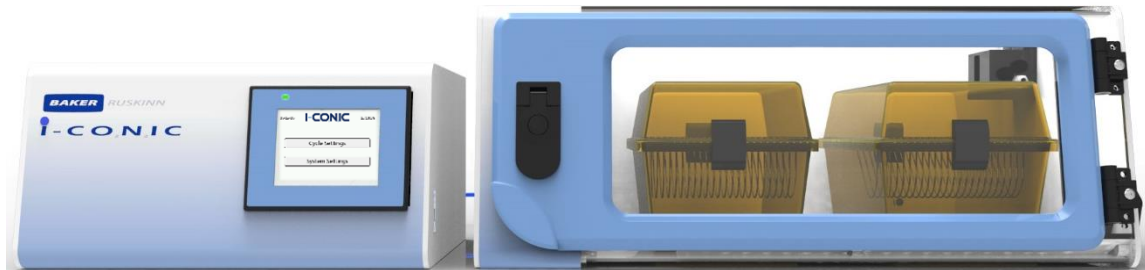


Figure 1: i-CONIC Gas Controller with Culture Chamber

SAFETY INSTRUCTIONS

Baker and/or Ruskinn do not take any responsibility for damages caused by using the equipment for other purposes than described in this installation manual.

- The mains appliance coupler and plug are the AC mains supply isolation device and must be easily accessible when installed.
- In case of emergency disconnect the VelO₂x from the AC Mains Outlet.
- Ensure that the connecting cable is not squeezed or bent when the unit is being installed or moved.
- All installation work and adjustments to the unit must be carried out by qualified personnel. Work performed by persons with insufficient technical knowledge may adversely affect the performance of the unit or cause physical injury or damage to the equipment.
- All servicing and repairs must be carried out by a qualified customer service engineer. Only genuine spare parts must be used.
- In case of damage to the VelO₂x disconnect the System from the mains outlet and contact your local distributor.
- All covers and lids must only to be removed by a qualified service engineer.
- Nothing should be placed on the top of the ICONIC.
- A power cord is supplied with the VelO₂x system and should be used to connect to the mains outlet. If a replacement is required it must be adequately rated for the application.
- All cables and pipes should be routed to ensure that they do not pose a trip hazard.
- Mains supply Voltage fluctuation must not exceed $\pm 10\%$ of the nominal Voltage.
- Gas regulators must be used for each gas supply. A 2 stage regulator is recommended. Over pressure could damage the VelO₂x system.
- Only the gases specified in this user manual may be used.
- All gas bottles must be adequately secured before connection to the ICONIC.
- The end user is responsible for all materials and equipment places inside the Culture Chamber.
- The VelO₂x system must not be operated at an ambient temperature over 30°C.
- The cooling fan covers and cooling vents must not be covered or blocked.
- The weight limit for the Culture Chamber internal floor is 30kg and must be evenly distributed.
- There should be no naked flames close to the VelO₂x System.
- The use of radioactive materials is strictly prohibited.

CAUTION: Asphyxiation Risk

The VelO₂x system uses Nitrogen (N₂) as part of normal use with the volume released externally is inconsequential. In the event of a leak or malfunction this gas release may become excessive. DO NOT OPERATE this unit in a SMALL ENCLOSURE such as a small room or closed cabinet. An accidental release of Nitrogen could create an asphyxiating atmosphere in a small space.

If the equipment is not use in a manor specified by the manufacturer, the protection provided by the equipment may be impaired.

Failure to adhere to these safety instructions could cause serious injury and will invalidate the VelO₂x system warranty. Ruskinn Technology limited accepts no responsibility for any accident, injury or loss caused by unsafe operation of the VelO₂x system.

SERVICE REQUIREMENTS

Gas Supply Requirements

The ICONIC gas supplies are located at the rear of the unit as shown in Figure 2.

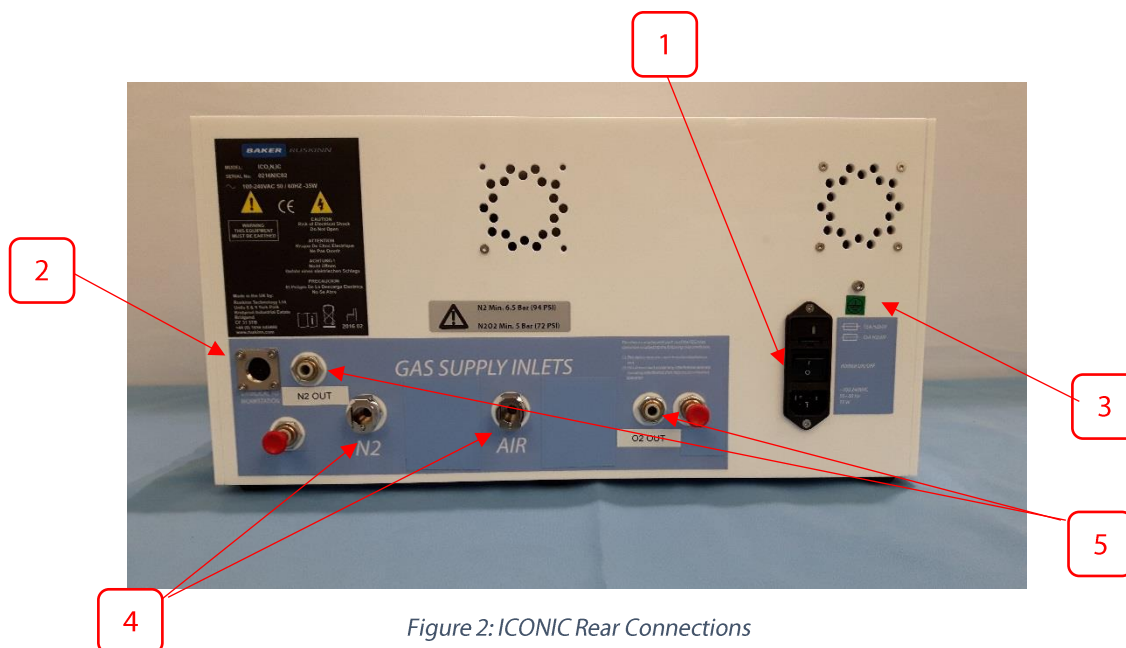


Figure 2: ICONIC Rear Connections

1. Mains Input Connector (C13)
2. Culture Chamber Electrical Connector
3. External Earth Point
4. Input Gas Connections
5. Culture Chamber Gas Connectors

The gas requirements are:

Gas	Symbol	Specification	Regulator Output Pressure
Nitrogen	N ₂	Oxygen Free (Industrial or medical)	6.5 to 7 bar (94 to 101 PSI)
Oxygen in Nitrogen	O ₂ in N ₂	35% Oxygen in Nitrogen (Industrial or medical)	5 to 5.5 bar (73 to 80 PSI)

Table 1: Standard Gases

For the gas supply we recommend direct connections of the gas bottle regulator to ensure minimal pressure drops and flow rate restrictions.

Check that the supply lines are leak free and that the pressure settings on the bottles are correct

Only the above stated gases are to be used with the ICONIC. Failure to comply with this may cause the product to become hazardous.



RUSKINN

CONTACT DETAILS

Ruskinn Technology Limited

Address:

8 & 9 York Park,
Bridgend Industrial Estate
Bridgend CF31 3TB
United Kingdom

Phone: +44 (0)1656 645988

Fax: +44 (0)1656 667966

Email:

Sales: sales@ruskinn.com

Technical support: techsupport@ruskinn.com

General enquiries: ruskinnooffice@ruskinn.com

Website: www.bakerruskinn.com

YouTube channel <http://www.youtube.com/ruskinntechnology>

Ruskinn Technology Limited is a registered company in United Kingdom, company number 05692599

Ruskinn Technology Limited is VAT registered in United Kingdom, VAT number 870194126

Ruskinn Technology Limited is a wholly owned subsidiary of The Baker Company